



# THE PALETTE



## Long Beach Art League

P.O. Box 862 Long Beach NY 11561  
Facebook Page: Long Beach Art League  
Instagram @longbeachartleague  
Website: [www.longbeachartleague.com](http://www.longbeachartleague.com)

June 2026

*The Long Beach Art League expresses sincerest gratitude to the sponsors below for their generous donations, devoted support and commitment to the arts. The funding has been instrumental to our organization and has enabled us to successfully promote the visual arts in the City of Long Beach. In addition, the LBAL provides the community with a variety of art learning experiences which include meaningful classes for seniors, art programs for the public and art scholarships for talented high school students.*

**Allegria Hotel**      **Barrier Beets**      **F & B Printers**  
**Linda Chong Haber**      **Jude Post**      **UBS**

## NEXT MEETING

**Wednesday, June 3<sup>rd</sup> from 7:00 - 8:30PM**

In person at the Long Beach Public Library Auditorium

Located at 111 West Park Ave. in Long Beach

Join LBAL members and Presley Rodriguez  
who will judge and discuss the artwork in The Leona Post Juried Exhibit.

**Judge Info:** Presley Rodriguez is the Assistant Director of Exhibitions and Collections at the Hofstra University Museum of Art where she is responsible for the curation, design and installation of exhibitions. She holds a BA in Archeology from Boston University and an MA in Art History from CUNY Hunter College.

## THE LEONA POST JURIED EXHIBIT

Long Beach Art League members are invited to participate in The Leona Post Juried Exhibit at the 2<sup>nd</sup> Floor Gallery of the Long Beach Public Library. Prizes will be awarded.

**Receiving Date:** Saturday, May 30<sup>th</sup> from 11:00AM – 12:00PM

**Location:** 2<sup>nd</sup> Floor Gallery at the Long Beach Public Library (111 W. Park Ave.)

**Theme:** None **Entry Fee:** \$20 **Pickup Date:** June 27<sup>th</sup>

*Show open to LBAL members only. One piece of art per person.*

## **Juried Exhibit Entry Fee Deadlines**

Mail a \$20 check by May 23<sup>rd</sup> to the  
Long Beach Art League at P.O. Box 862, Long Beach NY 11561  
or pay \$20 online by May 28<sup>th</sup> using the directions on the LBAL website at  
[www.longbeachartleague.com](http://www.longbeachartleague.com).

***Payment cannot be accepted at the Library during Receiving!***

*Continued on next page*

## THE LEONA POST JURIED EXHIBIT - Continued

Please make sure artwork is properly framed and securely wired. A completed Entry Form must be submitted with your artwork. By May 23<sup>rd</sup>, please email a high resolution image along with the title, medium and dimensions to Denise Bory at [sundaze517@aol.com](mailto:sundaze517@aol.com). If you have not done so, please read the Exhibition Guidelines, a document which has the procedures for submitting artwork. It is on the LBAL website at [www.longbeachartleague.com](http://www.longbeachartleague.com), and the Entry Form is on the last page.

### **Pickup Date** (*Dreams Exhibit*):

Saturday, May 30<sup>th</sup> from 11:00AM – 12:00PM

### END OF YEAR NOTES

**Pickup Date** (The Leona Post Juried Exhibit): Saturday, June 27<sup>th</sup> from 11:00AM – 12:00PM

LBAL exhibits at the Long Beach Public Library will resume in September 2026.

You will be notified about all LBAL summer activities via email.

The September issue of THE PALETTE will be emailed to members in early August.

## RENEW YOUR MEMBERSHIP BY AUGUST



The new Art League year starts in September 2026. Please remember to renew your LBAL membership by August. Our organization needs your support. Dues (\$30) can be paid by check or online by following the directions on the LBAL website at [www.longbeachartleague.com](http://www.longbeachartleague.com). Mail checks to the *Long Beach Art League*, P.O. Box 862, Long Beach NY 11561. If you have any questions about your membership status, please email Membership Chairperson Linda Kass at [klinda427@yahoo.com](mailto:klinda427@yahoo.com). Please pay your dues promptly to avoid disruption of membership benefits.

## BECOME A SPONSOR MEMBER OF THE LBAL!



Show your commitment to the arts, creativity and community by becoming a **Sponsor Member** of the *Long Beach Art League*. Your sponsorship and generosity will help sustain local arts programming, exhibitions, workshops and opportunities for artists of all ages. By supporting the arts, you help strengthen cultural life in our community while encouraging artistic expression and education. Make a lasting impact on the arts by signing up for a *Sponsor Membership* today. You will have special recognition and all the benefits of an exhibiting member. To become a sponsor, mail a \$250 check to the *Long Beach Art League* at P.O. Box 862 Long Beach, New York 11561. For more information, contact [lissetteresnick@gmail.com](mailto:lissetteresnick@gmail.com).



## DREAMS EXHIBIT

In May the Long Beach Art League (LBAL) unveiled its evocative *Dreams Exhibit* with 29 pieces of imaginative art from local artist and members. The show invites viewers into a world where emotion, memories and symbolism take center stage. Featured is a diversity of artwork, such as painting, photography and mixed media, which offers personal interpretations of the *dream state*. Recurring themes of nostalgia, desire, anxiety and many other emotions are beautifully expressed by the creative group. The vivid exhibit will be on display until May 29<sup>th</sup> in the 2<sup>nd</sup> Floor Art Gallery of the Long Beach Public Library.

The May 6<sup>th</sup> General Meeting featured the program, *AI & the Artist*, with LBAL Board Member Lisa Dawn Romano. The presentation explored practical AI tools that can assist artists with the business side of art such as developing titles, writing artist statements, creating social media posts, etc. Sammi Metzger, the Director of Arts in the Plaza, spoke about opportunities for artists at Long Beach's weekly outdoor festival located at Kennedy Plaza. (See the article on Page 5 for more information.)

### General Meeting - May 6, 2026



## SUGGEST A THEME

Suggestions are needed for themes for LBAL art exhibits for the year starting September 2026. Many thanks to Meri Ezratty who last year contributed *Life is Sweet* and Kathy Levine who suggested *Mysteries of the Sea*. Feel free to submit your inspiring ideas for future themes to [lindahaber@hotmail.com](mailto:lindahaber@hotmail.com). The Board of Directors will consider them during the summer planning sessions.

## RED, WHITE & BLUE EXHIBIT

West End Arts and Long Beach Art League members are invited to participate in the Red, White & Blue Exhibit at the 2<sup>nd</sup> Floor Gallery of the Long Beach Public Library. In commemoration of the 250<sup>th</sup> anniversary of America, this *tricolor* art exhibit will include artworks using three distinct colors – red, white and blue.

**Receiving Date:** Saturday, June 27<sup>th</sup> from 11:00AM – 12:00PM

**Location:** 2<sup>nd</sup> Floor Gallery at the Long Beach Public Library (111 W. Park Ave.)

**Theme:** None **Entry Fee:** None **Pickup Date:** August 1<sup>st</sup>

*Show open to WEA and LBAL members only. One piece of art per person.*

## Live Model Studio Session

Tuesday, May 12, 2026

7:00 - 9:30PM

BARRIER BEETS 190 Boardwalk Long Beach

*A \$15 model fee will be collected*

*Food & drinks available for purchase*

*Bring pad & drawing media Peer to peer guidance only*

**Contact:** [lissetteresnick@gmail.com](mailto:lissetteresnick@gmail.com).



## WOMEN IN THE ARTS



On Thursday, April 16<sup>th</sup>, Artists in Partnership (AIP) hosted its 9<sup>th</sup> Annual *Women in the Arts (WITA)* Awards Fundraiser in the ballroom of the Allegria Hotel. WITA recognizes individuals who are dedicated to the betterment of the community by supporting and promoting the arts. Hearty congratulations to Long Beach Art League Board Member Lisa Dawn Romano and new member Stephanie Elder-Laws who both received awards in the category of *Artists and Community*.

AIP is a not-for-profit cultural arts organization supporting visual, performing, literacy and wellness artists. For more information go to the website at <https://www.aip4arts.org>.



*Julia Cameron Quote Submitted by Richard Verity*

“The creative process is a process of surrender, not control.”

## LONG BEACH FINE ART EXPO IV

The popular *Long Beach Fine Art Expo IV* was on Sunday, May 3<sup>rd</sup> from 10:00AM – 6:00PM in the luxurious ballroom of the Allegria Hotel. The Expo, organized by representatives of the Long Beach Art League and West End Arts, showcased 22 local artists and their vibrant works of art which included photography, paintings, drawings, etc. On a lovely sunny day, a large crowd attended the beautiful and successful event. Much appreciation to the community and art lovers for their support! Expo V is coming in the Fall.



## ARTS IN THE PLAZA

*Arts in the Plaza* (AITP) is a popular weekly outdoor festival at Kennedy Plaza hosted by the City of Long Beach. It will take place on Saturdays (9:00AM – 2:00PM) from May 23<sup>rd</sup> through October 24<sup>th</sup>. At no charge, members are invited to showcase and sell their artwork under the LBAL tent. Sharing the tent with another member is permissible and lots of fun! Below are photos of LBAL members, Rosemary Leonetti, Barbara Lobosco and Rosemary Gole, who exhibited their artwork at AITP in past seasons. Email Art League President Lissette Resnick at [lissetteresnick@gmail.com](mailto:lissetteresnick@gmail.com) for information or to schedule a date this season. If you wish to assist with coordination of the AITP program, please contact Lissette.



## **LBAL ART CLASSES AT SENIOR CENTER**



With funding from the City of Long Beach, the Long Beach Art League presented four *Advanced Watercolor Painting* workshops in April at the Magnolia Senior Center located at 650 Magnolia Blvd. Master instructor Julia Yudes-Kuznetsov, with the use of technology, brilliantly taught a packed room of experienced senior artists. During the first session, students focused on the complexities of the color *green* and learned to make a variety of nature shades through pigment mixing. In later sessions, techniques such as wet-on-wet, wet-on-dry and intricate color layering were covered. Long Beach seniors, who were registered participants of the Senior Center, were eligible to attend this free program. Much appreciation to the City and Senior Center Coordinator Jennifer Cruz for supporting the League's educational programs for seniors.



## **CREATING MIXED MEDIUM ARTWORKS**



LBAL Vice President Meri Ezratty will be teaching *Creating Mixed Medium Artworks* on four Tuesday mornings in June at the Magnolia Senior Center located at 650 Magnolia Blvd. The program will be free to seniors registered at the Center. Artists with some experience are invited to join Meri to learn how to combine collage, drawing and painting techniques to create unique artworks that can be realistic or abstract. These stimulating workshops will improve each student's approach to art-making and expand their knowledge of various water-based mediums. Layering color pencil, acrylic, watercolor, collage and ink will allow everyone to create art that is impactful and fun. Registration is required. For more info, Long Beach residents should contact the Senior Center at (516) 431-3510.

## **WHAT'S HAPPENING**

### ***Laura Toledo – Upcoming Photography Exhibitions***



Congratulations to Laura Toledo who presents a series of solo exhibitions celebrating culture, color, and landscape across the Americas.

Her first exhibition, *Caribbean Colors of Colombia*, features vibrant photography from Cartagena. It will be on view at the Long Beach Library - West End Branch during the months of April and May. An opening reception will be held on May 13<sup>th</sup> from 6:00 to 8:00PM at 903 West Beech St. During the month of June, this exhibition will be shown at the East Rockaway Public Library located at 477 Atlantic Ave.



In July and August, Laura Toledo will present a second solo exhibition, *The Americas: A Tapestry of Land and Culture*, at the Hewlett-Woodmere Public Library located at 1125 Broadway in Hewlett. This collection highlights landscapes and people from across the continents, including Argentina, Chile, Brazil, Uruguay, Colombia, Costa Rica, Mexico, Cuba, and the United States. The reception will take place on July 11<sup>th</sup> from 1:00 to 3:00PM.

### ***Donna Gaines' Solo Exhibit – Art & Spirituality***



Best of luck to new LBAL member Donna Gaines who will showcase *Art & Spirituality* at the Long Beach Historical Society, from May 15<sup>th</sup> to July 16<sup>th</sup>, at 226 West Penn St. Thirteen paintings will be on display. Reception: May 17<sup>th</sup> from 1:00 – 3:00PM. For information about her artwork, please visit [www.donnagaines.com/artwork](http://www.donnagaines.com/artwork).

### ***Studio Time Locations***



Artists are invited to paint, create and collaborate in the free open art settings below! Meet local artists and LBAL members. Remember to bring your own painting supplies and tablecloth/newspapers if necessary.

Veterans of Foreign Wars (VFW) Building (675 West Park Ave.) provides space for artists and game players on Tuesdays from 10:00 – 3:30PM. Although hours are available starting at 10:00AM, most artists show up around 11:30AM. Call Larry at 516-987-6634 for information.

Island Park Public Library (176 Long Beach Rd.) has studio space for artists one Thursday per month in its 2<sup>nd</sup> Floor well-lit Community Room. Upcoming dates are May 28<sup>th</sup>, June 25<sup>th</sup>, July 30<sup>th</sup> and August 20<sup>th</sup> from 1:00 – 4:00PM. Call 516-432-0122 for information or to confirm date/time.

## NEW MEMBER

### **Stephanie Erdel-Laws**



The Long Beach Art League is thrilled to welcome the versatile Stephanie Erdel-Laws, an honoree in the *Women in the Arts* event sponsored by Artists in Partnership, Inc. in 2026. She is a multidisciplinary creator whose career impressively spans fine art, animation, music and corporate leadership. A native of Island Park in New York, she was raised in a household where art was a primary language and learned oil painting from her mother at the young age of eight. Stephanie achieved a Bachelor of Fine Arts degree in Art & Design from the University of Michigan. With a nod to her lifelong fascination with biology, she majored both in scientific illustration and painting.



Her professional journey began at *MTV.com*, sparking a transition into animation as an inker for *Spy Groove* and an assistant animator for *Saturday Night Live's TV Funhouse* and *Lizzie McGuire*. While attending the New York Academy of Art, her life was permanently altered by the horrific events of 9/11 at the World Trade Center. She channeled her trauma into both songwriting and painting. The emotional experience became the catalyst for her debut original music album, *Running from Fear*.

In 2002, Stephanie moved to Los Angeles, earning credits as a storyboard artist for Emmy-winning hits like *Cartoon Network's Camp Lazlo*. After nearly a decade of running her own web design studio, *Goddess Design*, she transitioned into corporate leadership. Currently she serves as the Creative Director at *NetRise* which specializes in software supply chain security.

Today Stephanie has returned to her roots in Island Park. Her hectic but rewarding schedule includes leading community projects like the 2024 Harbor Isle wildlife mural, performing with her cover band *Category3* or releasing new music. Since 2023, she has dedicated her practice to avian subjects, exploring the spiritual significance of birds in nature. Her art technique blends classical *master-style* grisaille and glazing with modern digital composition in Photoshop. Stephanie attends weekly classes at the Long Island Academy of Art to continue honing her craft. The Art League heartily congratulates her for selling *Cardinal 2025* (shown on the right) at its *Colors & Contours Exhibit* at the Shelter Rock Gallery. You can explore Stephanie's lovely works on her website at <https://stephanieerdel.com/art/> and follow her art journey on Instagram @[stephanie\\_erdel\\_art](https://www.instagram.com/stephanie_erdel_art).



## **PRESIDENT'S MESSAGE**



Dear LBAL Members,

As we close out another wonderful year together, I find myself reflecting on all that we've shared these past months - exhibits, conversations, creative growth and the simple joy of being part of a community that truly shows up for one another.

June brings us our final exhibit of the season, *The Leona Post Juried Exhibit*, with Receiving on Saturday, May 30<sup>th</sup> and our Artists' Reception and Judge Presentation on Wednesday, June 3<sup>rd</sup> at the Long Beach Public Library. It's always a special way to close the year, seeing the strength of our members' work and celebrating it together.

We're also excited to continue our collaboration with West End Arts for the upcoming July *Red, White & Blue Exhibit*. It's been such a rewarding experience to build connections beyond our League, and this partnership is a great example of how much more we can do when we come together.

This spirit of collaboration has carried through the season, from participating in the *Long Island Fine Art Invitational*, where several of our members were juried into the exhibition, to working with the City of Long Beach to offer meaningful art classes at the Magnolia Senior Center. A special thank you to Linda Chong Haber whose thoughtful leadership and steady dedication helped bring that program to life.

As summer begins, I hope you take time to slow down, enjoy moments with family and friends and find inspiration in the everyday. Whether you're traveling, painting outdoors or simply observing more closely, I hope the season gives you space to create and recharge.

Thank you again for being such an important part of the Long Beach Art League. I'm already looking forward to all that we'll share when we return in the fall. Wishing you a happy, healthy and art-filled summer.

With gratitude,  
Lissette Resnick  
President, Long Beach Art League  
[lissetteresnick@gmail.com](mailto:lissetteresnick@gmail.com)

## **VOLUNTEER OPPORTUNITY**



Please consider contributing to the success of our Art League by volunteering for a vital role, *Corresponding Secretary*. The main responsibility is timely communication with Art League members. This position is ideal for someone who is organized, fairly technical, detail-oriented and a good writer. Guidance and training will be provided. Interested individuals should contact President Lissette

Resnick at [lissetteresnick@gmail.com](mailto:lissetteresnick@gmail.com).

## THE ARTIST'S VOICE

### CARTOONS

#### *In Italian Renaissance Art*

By LBAL Board Member Carolyn DeSoucey



The current exhibit at the Metropolitan Museum of Art, *Raphael: Sublime Poetry*, highlights art techniques which were hugely important. In many ways, they were the basis for how *art studios* worked with a master and apprentices who learned from that master. The exhibition, on display until June 28<sup>th</sup>, includes sketches, drawings and paintings showcasing Raphael's and his assistants' works.



Many years ago, I was fortunate to view Raphael's cartoon for the *School of Athens* which is housed in the Pinacoteca Ambrosiano in Milan. The painting (on the left) itself is in the Vatican, but the drawing is more accessible. It is an extremely wide composition which includes a goodly number of the philosophers we identify as those from Ancient Greece.

When the word *cartoon* is mentioned today we think of a story told through satire or humor. An earlier meaning had its place in Renaissance art. It is a full-scale preparatory drawing (shown below) used to transfer complex designs for frescoes, tapestries or large paintings.

Today the technology allows us to leap from an idea to a finished work; at least the materials to do so are there. During the centuries we identify as the Renaissance the process was more of a challenge. Drawings would be done using silverpoint on stone a good part of the time. When paper or vellum (animal skin) would have been the drawing surface, the process became much more complex. Studies would be done of figures or buildings and then combined to create a composition. Either the master or one or more of his studio apprentices would be involved.



To create the composition, the figure or portion to be used would need to be set up. A series of pinpricks would be scored along the object and then placed over the wall or tapestry. Finally a bag of soot would be blown over or pounced onto the cartoon establishing the drawing. From there the artist would have the drawing rudiments ready for paint or, in the case of tapestries, yarn.

The show at The Met includes many such preliminary cartoons that were used by Raphael, Leonardo and other contemporaries.

## THE ARTIST'S PALETTE

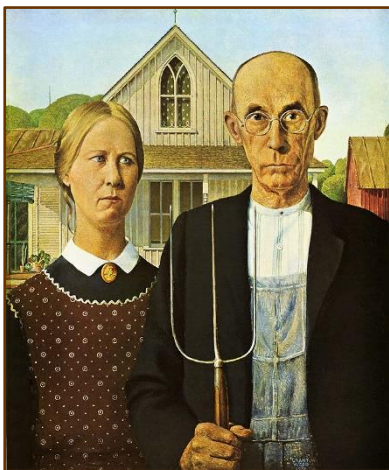
*This column features art history and work methods which may be helpful to artists.*

### **American Regionalism and Grant Wood**

The *American Regionalism* art movement emerged in the United States during the 1920s and 1930s. It included paintings, murals, lithographs and illustrations depicting realistic scenes of rural and small-town America, primarily in the Midwest. In a mostly agricultural nation, the movement focused on familiar landscapes, local traditions and hardworking people. At a time marked by the economic hardships of the Great Depression, Regionalist artists sought to celebrate the resilience, values and identity of everyday Americans.



The most well-known Regionalist artists are the highly respected, Thomas Hart Benton, John Steuart Curry and Grant Wood shown on the left. The Iowa-born artist believed that for inspiration, American artists should look inward to their own communities and experiences rather than to European styles and influences. He depicted his native Midwest with the clarity and precision he observed in Northern Renaissance art and the organic lines and curves of Art Deco design.



Shown on the left is Wood's most famous work, *American Gothic* (1930), which is one of the most recognizable images in American art. A youngish woman (Wood's sister) in conservative dress, eyes averted, stands next to an older man (Wood's dentist), who wears a dark suit jacket atop overalls and a collarless shirt. The bald-headed, bespectacled man grips a three-pronged pitchfork and gazes flatly at the viewer. Behind them is a modest white home (the Dibble House), with a decorative gothic window - a common feature of the *Carpenter Gothic* style of the period. The curtains in the window echo the pattern of the woman's dress. The composition is simple yet striking, with its vertical lines, meticulous detail and carefully balanced forms. Wood

employed smooth surfaces, sharp detail and a controlled, almost photographic realism. Every element, from the pitchfork echoing the lines of the farmer's overalls to the delicate patterning of the house, contributes to a sense of order and intentionality. Through his depiction of the Dibble House, Wood transformed an ordinary structure into a powerful cultural symbol. Today, the house remains a point of interest and pilgrimage for art lovers.

Grant Wood's sharp and stylized paintings remain some of the most iconic thus providing him with a permanent place in American popular culture.

*Information from this article has been excerpted from <https://www.theartstory.org/artist/wood-grant/>, Wikipedia, CHATGPT and GOOGLE Gemini.*

## THIS AND THAT

### **Members' Bulletin Board**



*HWPL Online Art Gallery Features Welcome to Myrawwland*  
Kudos to Myra Rachelle Cohen who has a May exhibit of her mixed media art at the Hewlett-Woodmere Public Library's online art gallery. You can view Myra's May show, *Welcome to Myrawwland*, by going to <https://hwpl.org/art-gallery/>.



#### *Welcome to New Members*

The Long Beach Art League warmly welcomes new members Donna Gaines, Gerald A. Haber, Carole Musumeci, Deanna Parlagreco, Josephine Parlagreco, Margaret Piazza and Henrietta Staub to our blossoming art community. For info about LBAL membership status and benefits, please email Membership Chairperson Linda Kass at [klinda427@yahoo.com](mailto:klinda427@yahoo.com).

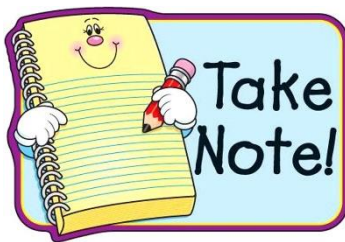


#### *Art League Member Benefits*

Members, especially those who don't have their own website, may publicize their artwork on the LBAL website for a one-time fee of \$35. An artist may post a photo of themselves, a short bio and six images of artwork. Please contact Denise Bory at [sundaze517@aol.com](mailto:sundaze517@aol.com) if you are interested.

A member can have a link from the LBAL website to his/her website at no charge. If interested, please contact Denise Bory at [sundaze517@aol.com](mailto:sundaze517@aol.com).

The LBAL provides many opportunities for volunteerism. Our organization needs more members to be involved. Consider helping the Board of Directors several hours a month. Your assistance would be greatly appreciated. Please contact President Lissette Resnick at [lissetteresnick@gmail.com](mailto:lissetteresnick@gmail.com) if you are interested.



#### *Important Exhibition Guidelines*

When submitting artwork for an exhibit, please cooperate by completing an Entry Form for each piece of artwork PRIOR to appearing before the Receiving Committee. Printing an Entry Form from exhibit email notifications or the LBAL Exhibition Guidelines is the responsibility of each artist. *For those without printers at home, the Library has computers and printers on the First Floor.* Thank you for your assistance in expediting the exhibit Receiving process!

The LBAL monitors activity during the pickup period to ensure all artwork is properly retrieved by owners. Please notify the Receiving Committee when you retrieve your artwork.

*Members are invited to submit items of interest for THIS AND THAT to [lindahaber@hotmail.com](mailto:lindahaber@hotmail.com).*