



THE PALETTE

Long Beach Art League

PO Box 862 Long Beach NY 11561
Facebook Page: Long Beach Art League
Instagram @longbeachartleague
Website: www.longbeachartleague.com



Mar. 2024

The Long Beach Art League expresses sincerest gratitude to Jude Post, daughter of founder Leona Post, for her generous donations through the John J. Flemm Foundation. The funding has been instrumental to our organization and has enabled us to successfully promote the visual arts in the City of Long Beach. In addition, the LBAL provides the community with a variety of art learning experiences which include meaningful classes for seniors and art scholarships for talented high school students. We are deeply grateful for Ms. Post's devoted support and commitment to the arts.

NEXT MEETING

Sunday, March 24th from 2:00 - 4:00PM

In person at the Rockville Center Public Library
Located at 221 North Village Ave. in Rockville Centre

Join us for the *New Horizon Exhibit* Artists Reception

All visual artists, family members and friends are invited.

Donations of refreshments would be greatly appreciated.

ART PICKUP & RECEPTION DATES

Multicultural Exhibit at the Long Beach Public Library

Pickup: Saturday, Mar. 2nd from 11:00AM – 12:00PM

New Horizon Exhibit at the Rockville Center Public Library

Pickup: Sunday, Mar. 24th from 4:00 – 4:30PM

Reception: Sunday, Mar. 24th from 2:00 – 4:00PM

LBAL Shows & Meeting Dates*

Month	LBPL Gallery Exhibit	General Meeting
Mar.	No LBAL show at the LBPL Multicultural Exhibit Art Pickup – 03/02/24 11AM	Rockville Center Public Library Artists Reception – 03/24/24 2PM Art Pickup – 03/24/24 4PM
Apr.	Nature - A Juried Exhibit 03/30/24 11AM	Artists Reception & Judge's Remarks 04/03/24 7PM
May	Daily Life Exhibit – 04/27/24 11AM	TBA – 05/01/24
Jun.	The Leona Post Juried Exhibit 06/01/24 11AM	Artists Reception & Judge's Remarks 06/05/24 7PM

*Program information subject to change based on inclement weather or unforeseen circumstances.

NATURE – A JURIED EXHIBIT

Plan ahead and work on the next exciting Long Beach Art League juried show. Members are invited to exhibit their artwork in April at the 2nd Floor Gallery of the Long Beach Public Library. Prizes will be awarded.

Receiving Date: Saturday, March 30th from 11:00AM – 12:00PM

Location: 2nd Floor Gallery at the Long Beach Public Library (111 W. Park Ave.)

Theme: Nature **Entry Fee:** \$20

Show open to LBAL members only. One piece of art per person.

MULTICULTURAL EXHIBIT



The Long Beach Art League is delighted to present its engrossing and engaging *Multicultural Exhibit* which will be on display in the 2nd Floor Art Gallery of the Long Beach Public Library until March 1st. The show highlights the cultural richness of our society, the diversity in our nation and world and recognizes Black History Month and the Lunar New Year. The collection of art includes a variety of intriguing portraits, Asian inspired artwork and glimpses of interesting world locations. Shown on the left is Susan

Laudani Stolfi's painting, *Lunar New Year*.

At the General Meeting on February 7th via ZOOM, GOLDEN's knowledgeable presenter, Barbara De Pirro, provided artists with a broad understanding of many products with examples of how they work beautifully for watermedia, acrylic paint as well as inks & drawing. Barbara shared several techniques and kindly answered many questions during the virtual event. A class summary and images were provided after the session to allow artists to continue their exploration independently. Attendees had the opportunity to request free product samples. Artists can visit <https://goldenartistcolors.com> to view more videos and find instructors who are teaching virtually.

NEW HORIZON EXHIBIT AT THE ROCKVILLE CENTRE PUBLIC LIBRARY



The Long Beach Art League's *New Horizon Exhibit* will be on display until March 24th at the Rockville Centre Public Library's spacious Community Rooms. The huge and diversified 55-piece show will definitely be enjoyed by the patrons of the RVCPL's programs. The Artists Reception will be on Sunday, March 24th from 2:00 – 4:00PM. Artists may pick up their work from 4:00 – 4:30PM after the reception on March 24th. The online slideshow will be live

during the month of March on the Art League's website at www.longbeachartleague.com. Shown above is *Waddling* by Kelly Graham.

Live Model Studio Session - January 21, 2024



Local artists and LBAL members had a productive and enjoyable Sunday afternoon at the *Live Model Studio Session* on January 21st. This joint program with the Long Beach Public Library took place in the spacious Auditorium which was beautifully set up. The model was very good and provided the artists with many different poses. Much appreciation to the Library Staff for supporting this community art event. LBAL members should check for email notification of February's live model drawing event.

THE ARTIST'S VOICE

What is Art?

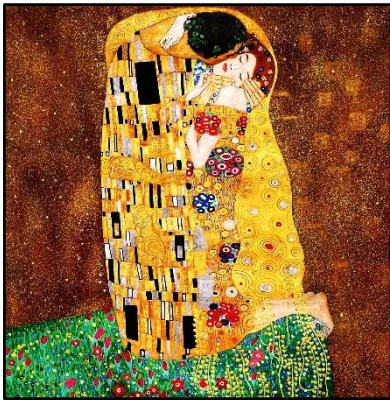
By THE PALETTE Editor Dina Fine

What is Art? This is the essential question for those of us who have this strange compulsion to put pencil to paper or paint to canvas. For many of us, we were born with an ability to visually recreate the world around us on paper. We are good at that, and so we enjoy it and cultivate that ability by constant repetition. This is a good answer to the question but however, not the full answer. There are as many reasons as there are artists. Most of us in contemporary times want to make a statement of some sort with art. In years gone by, the prevailing culture demanded that artists produce paintings, murals, statues, decorations and art which conformed with the current esthetic taste, delighted the buyer and flattered and pleased the ruling classes. An artist was successful and even amassed wealth if they had the ability to do what a client asked for. The best of them were able to incorporate something into the image that evoked the inner personality and feelings of the artist or the subject being painted. The question then is what is that something and how do we cultivate it in our art.

Continued on next page

THE ARTIST'S VOICE - Continued

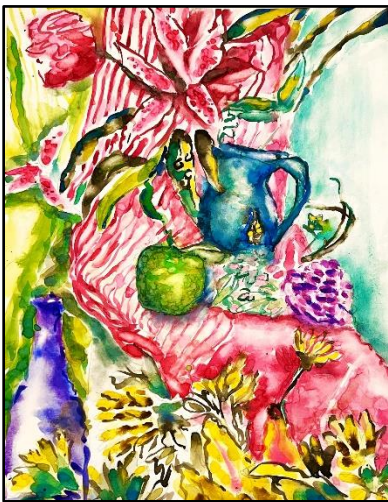
Up until the late 1800's, in order for an individual to survive as an artist in western culture, he had to conform to certain standards of image making as taught in academies. If he did not, he could not sell his art. At that time, a revolution *or revolt* took place against this way of doing things since art had become stale and uninteresting. Now we get a little closer to the answer to our question. *What is Art?* Why do we feel that an image either inspires us or bores us? Even an image that is a completely accurate depiction of the natural world can leave us cold because the artist does not know how to change what he sees into what he feels about what he sees. There lies the beginning of the answer to the question. Only the beginning mind you, but a beginning nonetheless.



Today most artists try to tell a story or send the viewer a message through the art they create. These messages can be social commentary or political belief, or the way any given scene makes an artist feel and the need to share that feeling with the world. The painting on the left is titled *The Kiss* by Gustav Klimt. He injects such passion into the embrace that we feel in our own bones the surrender of the woman as she melts into the arms of the man. It is this along with master craftsmanship that makes the painting one of the greatest of all time. That is Art!

Journey of a Lifetime

By LBAL Member Mitchell Rodbell

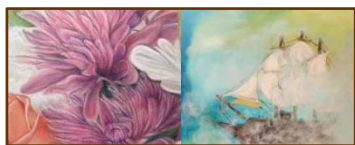


As emerging, determined artists I believe we all feel the need to move forward in our creative lives. Do we continue on this art journey, creating work that is similar to something previously executed or do we push ourselves to work outside of our comfort zones? How do we motivate ourselves to create something new and fresh? If we have painted six landscapes, do we take our favorite one and do it in different techniques or do we now try to repaint it different times of the day? Do we switch from landscapes and now try still lifes? If we like watercolor, do we change to pen and ink for a few days and then add watercolor or do we try acrylics watered down? If we paint on canvas, do we try wood? Should we create a color palette first?

The answer I believe is *Yes!* Creating good art is a journey of a lifetime and it's our responsibility as artists to grow through experimentation - changing mediums, changing subject matters and changing your perspectives. It is also very important to always look at great art, whether it be in museums or galleries.

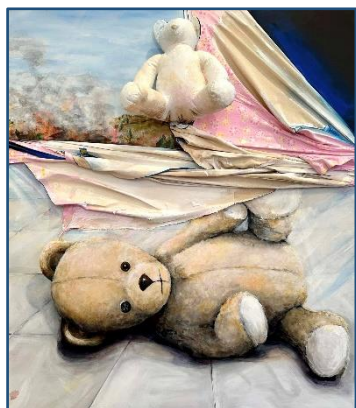
The watercolor painting shown above is titled *My Still Very Colorful Life* by Mitchell Rodbell. View his wonderful variety of artwork on the website www.mrodbellart.com and follow him on Instagram @MRodbellart.

WHAT'S HAPPENING



Two Women Exhibit

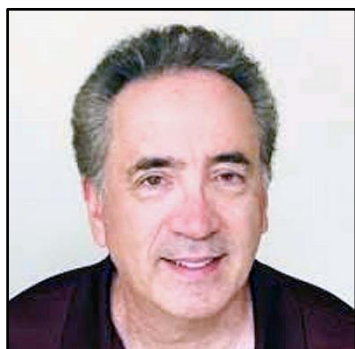
Hearty congratulations to LBAL members Susan Laudani Stolfi and Jennifer Rosoff who had a two women exhibit of their work at the Elmont Memorial Library in January 2024.



In the Middle of a Nightmare

Efrat Baler-Moses' artwork on the left belongs to a series that delves into the complexities of the human experience amidst times of upheaval. Each piece in this series embodies subtle indications of an underlying turmoil, juxtaposing elements of destruction against a serene backdrop. Through an exploration of the artwork's construction, at times disrupted or deconstructed intentionally, these pieces encourage contemplation on the delicate balance between tranquility and unseen disturbances within our surroundings. Central to this series is the portrayal of mundane objects that carry concealed narratives or stories, hinting at deeper, possibly unsettling layers beneath their seemingly ordinary facades. The use of these ordinary elements invites viewers to unravel the hidden complexities and reflect on the fragility inherent in both life and our environment.

To view Efrat Baler-Moses' thought-provoking artwork, go to the website www.efrat-art.com or follow her on Facebook @Efrat Baler-Moses or Instagram @ef4art.



Artist Contributes to LI Community

After retirement LBAL member and Charcoal Artist Steve Walker wanted give back to his Long Island Community, make an impact and be able to feel gratification doing it. He started by utilizing *VolunteerMatch* which allowed him to find the best volunteer opportunities near East Northport where he currently resides. He discovered *Rebuilding Together Long Island (RTLTI)*, a 30-year-old charity which utilizes volunteers to provide free safety home repairs to homeowners who are financially and physically unable to maintain their homes. Clients are low-income seniors, veterans, families and those with physical limitations. Even though he was not handy, Steve started out as a Home Visitor, meeting with each homeowner who called in for help. He reviewed their desired safety repairs which sometimes included a request to construct a wheelchair ramp. As a Home Visitor, he was in charge of gathering all their required financial information & documentation to determine if they qualified for assistance. Steve eventually became RTLTI's Outreach Coordinator, interacting with the Long Island community along with other nonprofits and developing partnerships with other organizations. Over time Steve became a Board Director and for the past four years a Vice President who helps run the organization. If anyone is interested in assistance with home safety repairs, please call the RTLTI office on Monday through Friday from 10:00AM – 1:00PM at 631-777-7894.

PRESIDENT'S MESSAGE



Dear LBAL Members,

As we step into the vibrant month of March, filled with the promise of spring, let's embrace the themes of renewal and optimism that echo through this season. It's a time to celebrate diversity, growth and the beauty that unfolds when we come together as a community.

We have recently initiated new programs including figure drawing studio sessions and the upcoming *Artful Salon*. The Art League is eager to continue our creative journey, and we invite you to be an integral part of it. Whether you have thoughts on new classes, exhibition themes or community outreach projects, we welcome your input.

March also brings a wonderful opportunity for members to volunteer and get involved in shaping the future of the Art League. If you have a passion for fostering creativity and community spirit, consider lending your time and expertise. Your contribution, big or small, plays a crucial role in the success of our endeavors. Additionally, I encourage you to participate in our upcoming meetings. It's in these gatherings that we can exchange ideas, share experiences, and collectively envision the exciting possibilities that lie ahead for our organization. Your presence and insights enrich our discussions and contribute to the vibrant tapestry of our artistic community.

Let's make March a month of creative blossoming, not just in our art but also in our connections with one another. Your involvement and engagement are vital to the growth of the Art League, and we look forward to seeing your ideas come to life. Thank you for being an essential part of our community. May March bring inspiration, collaboration, and a renewed sense of artistic joy to each and every one of you.

Creatively yours,
Lissette Resnick, President
lissette@longbeachartleague.com

THE ARTFUL SALON



The Long Beach Art League announces a new discussion program, titled *Artful Salon*, to allow visual artists to network, inspire and learn from each other by sharing ideas, experiences and techniques. Led by LBAL Board Member Carolyn DeSoucey, an experienced art instructor, periodic meetings will be wonderful opportunities for artists to share their knowledge and talents, find support and continue to grow. The first session will be on March 30th at 12:30PM at the Long Beach Public Library. Registration will be required. More information will be emailed to all members.

NEW MEMBER

Jack Tenenzaph



It is a great pleasure for the Long Beach Art League to welcome award-winning artist, Jack Tenenzaph, as a new member. The High School of Art and Design in Manhattan is where his artistic training began. After receiving a Bachelor of Fine Arts in Painting from Pratt Institute, he worked as an illustrator. Jack had a long career in textile design for home furnishings, eventually becoming a design director for several well-known firms in New York City.

Throughout his professional career, Jack has always made time to continue painting, striving to advance his individual expression and to further his techniques. Working in different genres has always given him great satisfaction. From realism to abstract expressionism, his goal is to find a personal viewpoint within each effort. He aspires to create a *sense of place* in which to share an impression of mood and atmosphere along with an appreciation of the subject. Jack paints in the studio, inspired mostly from photos taken on travels and around Long Island. He also works from sketches and from his imagination.

Jack's artwork has been exhibited at several juried shows, in Manhattan at the Salmagundi Club and on Long Island at the Art League of Long Island, the Huntington Arts Council, the Long Beach Art League and the Barnes Gallery. You can view his amazing artwork at the website www.jacktenenzaph.com. He also shows his art for prints at Fine Art America at <https://jack-tenenzaph.pixels.com/>.

WELCOME TO NEW MEMBERS



The Long Beach Art League heartily welcomes new members Ruquiah Ayala, Kelly Graham, Patricia T. Maraia and Roni Murillo.

If you have any questions about your membership status and benefits, please email Membership Chair Linda Kass at klinda427@yahoo.com.

OPEN BOARD POSITION - HOST



Join the Board of Directors and be the Host of LBAL's festive in-person meetings. Duties include coordinating a team of volunteers to purchase and set up refreshments. Please think about serving your art community and contributing to the success of our Art League. Interested individuals should contact President Lissette Resnick at lissette@longbeachartleague.com. Thank you so much for volunteering!

THE ARTIST'S PALETTE

This column features art history and work methods which may be helpful to artists.

Magic Realism

In 1925 the term *magic realism* was used by German photographer, art historian and art critic Franz Roh to describe modern realist paintings with fantasy or dream-like subjects. In Central Europe the art category was part of the reaction against modern or avant-garde art that emerged in the 1920s. The combining of present and past, the invention of strange objects, the juxtaposition of unlike things and the depiction of alienation are just a few of the ways in which magic realist painters evoke the mysteriousness and uncanniness of everyday reality. Unlike the surrealists, the magic realists did not wish to probe the unconscious, dreams, or interior states. They focused on explorations of the strangeness and incongruousness of existence. Often using much detail and unusual perspective, the artists conveyed the wonder of observable reality.



With his visionary artwork of the end of the world, Franz Radziwill (1885 – 1983) became a leading figure of magic realism. After spending a couple of years in Berlin in 1923 Radzi settled in the town of Dangast, a coastal city on a bay off of the North Sea. He was both pleased by and concerned about the encroaching technology in this small town. He often depicted this ambivalence in his paintings. For example, in *Beach of Dangast with Flying Boat* shown on the left, there is a quiet and normal beach scene with an airplane which seems to lack a propeller and whose body resembles the hull of a ship. Its purpose, its passengers and its destination all remain mysterious. Additionally, the lighting of the scene and the strange rocks that punctuate the beach seem to have fallen from another world.

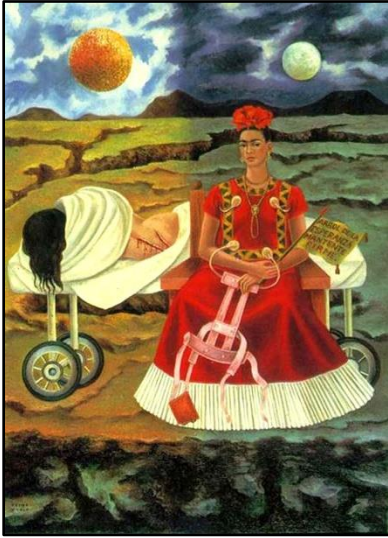


Andrew Wyeth's brand of magical realism provided views of everyday life from unusual perspectives or his imagination. He has a great ability to portray a sense of mystery. His painting *Soaring* (1942 – 1950) is a realistic rendering with a bird's-eye view demonstrating Wyeth's masterful technique and his imaginative powers. The viewer occupies the realm of birds, gliding aloft a field and looking down upon a small farm house. This aerial perspective is at once dizzying and ominous, as these are not just any birds but three large vultures flying circles around an isolated home. The scavenging nature of these birds coupled with the brown shades of the rolling fields suggest impending death and give the scene a haunting feel. His exacting methods, which compelled him to spend eight years on this painting, rendered a scene that is at once completely realistic and yet full of foreboding.

Information from this article has been excerpted from <https://www.tate.org.uk/art/art-terms/m/magic-realism>, Wikipedia and <https://www.theartstory.org/movement/magic-realism/>.

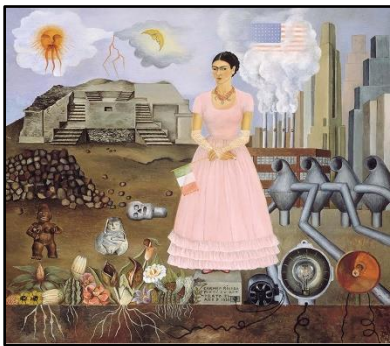
THE ARTIST'S PALETTE - Continued

Frida Kahlo and Magic Realism



Mexican artist Frida Kahlo combined realism, surrealism, and fantasy with icons from her Mexican culture to create art in the category of magic realism. Her art focused on her own reality which included suffering, strangeness and pain. A terrible bus accident at 18 left her in constant discomfort with health problems for the rest of her life. Her physical pain was compounded by a tumultuous marriage to her famous husband, Mexican artist Diego Rivera, who was frequently unfaithful.

In *Tree of Hope* (shown on the left), we see Kahlo in traditional Mexican dress, holding a pink corset and a flag that reads (in English): *Tree of Hope, Stay Firm*. Behind her is a woman on a hospital bed, partially covered in a white sheet, with her scarred back exposed. This woman is also Kahlo after a bus accident which required major spinal surgery. The ground contains wide fissures, reminiscent of the scars on her back. Many of her paintings highlight this experience and pain. However, she includes traditional Mexican settings and symbols, expressing a broader meaning for her paintings. The two Fridas occupy a barren Mexican landscape suggesting the destructive nature of Mexico's colonial past, present poverty and political tumult have left deep trauma on the country and on her personally as well.



Kahlo spent much of her time in the U.S. painting. Her 1932 painting, *Self-Portrait on the Borderline between Mexico and the United States*, shows her ambivalence about the U.S. The painting has iconic Latin American symbols on the left, American industrial progress and pollution on the right and Frida in the middle, holding a Mexican flag. She uses a Magical Realism technique of juxtaposing unlike objects in an uncanny manner. Looking at the painting, we wonder why she's dressed in a feminine pink dress, so unlike her vibrant costumes in other paintings. She looks like a debutante until you notice that she's holding a cigarette in her right hand. In the painting, Kahlo's Mexico is a place of contradiction with flowers and vegetation as well as a skull on the ground and a sun that spouts fire.

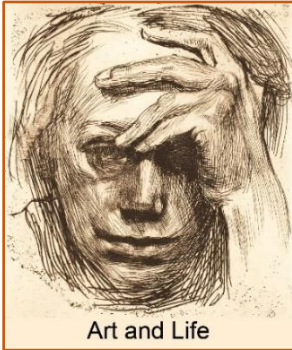
Kahlo gained recognition in her later career and widespread fame after her death. Her work became better known in the 1970s when feminist scholars began to write about her contributions to art. There's nobody in the history of art who has painted such evocative and surreal paintings that combine symbolism, autobiography, and magical realism.

Information from this article has been excerpted from <https://www.1000museums.com/frida-kahlo-art-magical-realism/> and <https://www.tate.org.uk/art/art-terms/m/magic-realism>.

THE ARTIST'S PALETTE - Continued

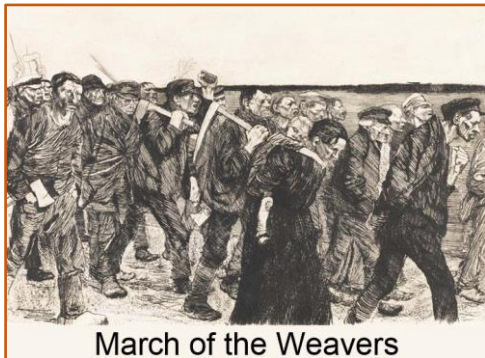
Käthe Kollwitz at MOMA

By LBAL Board Member Carolyn DeSoucey



It has long been questioned which artistic discipline might be more demanding of the artist's skills at replicating what we see. It is one which altered the way Käthe Kollwitz has come to be known in the world of Art. Born in 1867 in what is now Kaliningrad, Russia, she is known as a German artist as wars and history have altered borders. While she is known today as a printmaker, she started her artistic career as a painter. The exacting art of drawing challenged her ideas and talents in a way that painting could not. She turned to intaglio printmaking as the medium of her choice.

While Kollwitz holds a position of high regard in metal plate printmaking, she also worked in woodblock and lithography. She said woodblock printing could express her ideas more strongly than intaglio. It is with a sense of timing that MOMA is now



highlighting Käthe Kollwitz with a show that will run from March 31st through July 20th. Her work reflects man's suffering. Her compassion for the downtrodden - the poor, the ailing and the plight of women - resounds as strongly today as it did when she was alive. From the mid-19th century through the mid-20th century our peoples saw two world wars brought about by man's inhumanity to man. This exhibit promises to catalyze our feelings of responsibility to one another and to ourselves as human beings.

Intaglio Printmaking

By LBAL Board Member Carolyn DeSoucey

Intaglio printmaking is a technique which includes etching, engraving and dry point. A metal plate, copper or zinc, is used in the process. The plate's surface is altered by a tool: directly by a burin in engraving, an etching needle in dry point or indirectly by a needle in etching. Etching involves first laying a ground of wax or varnish on the plate's surface, then drawing onto that surface, immersing the plate into an acid bath which eats into the plate, and finally removing the coating. The plate is then inked and wiped. Ink has been drawn into the grooves as had been with engraving and dry point. The plate and paper are put under pressure through a press as the image is drawn out and onto the paper. A *proof* is created from which the artist may do further work. The great advantage of this process is there are many pieces created (an edition), rather than one.

THIS AND THAT

Members' Bulletin Board



Teaching Opportunity

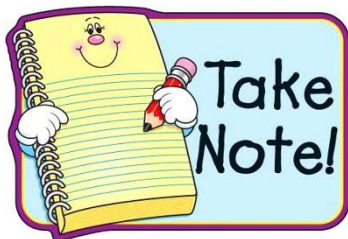
The Suburban Art League (www.suburbanartleague.com) is putting together its 2024-25 evening demonstration schedule and is looking for experienced demo artists to fill paid positions. On the first Tuesday of each month a different instructor does a two-hour presentation in any medium at the Syosset Woodbury Community Center located at 7800 Jericho Turnpike in Woodbury. Anyone interested should contact Lisa Corradi at 516-445-7403 or suburbanartleague@gmail.com for more info.



Art League Member Benefits

Members may publicize their artwork on the LBAL website for a one-time fee of \$35. An artist may post a photo of themselves, a short bio and six images of artwork. If interested, please contact Denise Bory at sundaze517@aol.com.

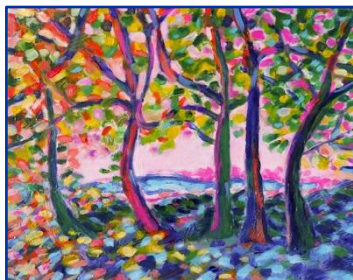
The LBAL provides many opportunities for volunteerism. Our growing organization needs more members to be involved. Consider helping the Board of Directors several hours a month or apply for open Board positions. Your assistance would be greatly appreciated. If you are available, please contact President Lissette Resnick at lissette@longbeachartleague.com.



Important Exhibition Guidelines

When submitting artwork for an exhibit, please cooperate by completing an Entry Form for each piece of artwork PRIOR to appearing before the Receiving Committee. A high resolution digital image (JPEG) of your work must be emailed to Denise Bory at sundaze517@aol.com prior to the receiving date. Thank you for your assistance in expediting the exhibit setup process!

For all LBAL exhibitions, artwork must remain on display for the duration of the show. It must not be moved, repositioned or removed. Exchanges are also prohibited. Please do not add to or rearrange artwork in an LBAL exhibit.



Mitchell Rodbell Joins NYC Gallery

Congratulations to LBAL member Mitchell Rodbell who has joined the established Pleiades Gallery located in Suite 304 at 547 West 27th Street in West Chelsea. He is exhibiting with many talented artists and will eventually have a solo exhibit. The historic gallery, in the Landmark Arts Building in New York City, will celebrate its 50th anniversary in May.

Continued on next page

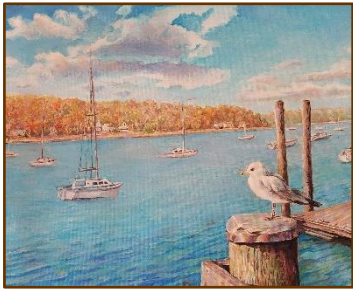
THIS AND THAT - Continued



Great News about LBAL Members

Congratulations to Lillian Reznicek, Mitchell Rodbell and Jack Tenenzaph for getting sales inquiries about their artwork in the *New Members Exhibit* at the Long Beach Public Library.

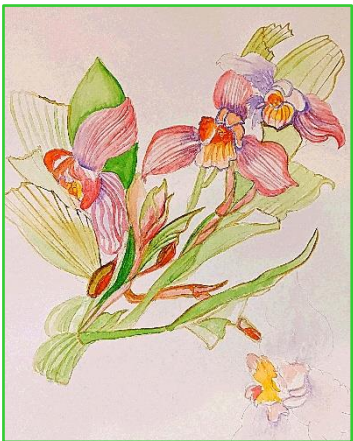
Kudos to Jaclyn Feldman who got a sales lead for her collage in the *Celebration of Art Exhibit* at the LBPL.



Much Applause for Lillian Reznicek!

Heartiest congratulations to Lillian Reznicek who will be receiving a recognition award at the *Woman in the Arts* event sponsored by Artists in Partnership, Inc. The ceremony will take place at the Allegria Hotel on April 4th from 6:00 – 10:00PM.

You may view Lillian's very lovely artwork at her *Water Edges Exhibit* in February and March at the West End Branch of the Long Beach Public Library located at 903 West Beech Street. (Please call 516-432-2704 for opening hours.) Everyone is invited to the reception on Wednesday, March 13th from 6:30 - 8:00PM.



Painting Programs by Rosa Maria Goeller

Join Instructor Rosa Maria Goeller for an afternoon of creating every Wednesday in February and March from 2:00-4:00PM at St. Mary of the Isle Community Center located at 315 East Walnut Street. Please use the entrance on Monroe Blvd. by the ramp. This free program will allow artists to work on projects, polish drawings and enjoy doing art together. For more information, email Rosa at rmgoeller@gmail.com.

On Thursdays in February and March from 2:00-4:00PM, there will be a painting class at A & T Garden Center located at 4373 Austin Blvd. in Island Park. Artists will get to work with exotic specimens such as orchids and ferns. The fee for each session is \$10. Space is limited. Email Instructor Rosa Maria Goeller at rmgoeller@gmail.com to register.

Rosa Maria Goeller regularly teaches daytime art classes at the Main Branch of the Long Beach Public Library located at 111 West Park Ave. To find out about art and other excellent classes at the Library, subscribe to the weekly e-newsletter by emailing Timothy DuPont at timwdupont@longbeachlibrary.org. For more information or to register for classes, please call the Reference Desk at 516-432-7201.

Members are invited to submit items of interest for THIS AND THAT to lindahaber@hotmail.com and dinafine125@gmail.com.